

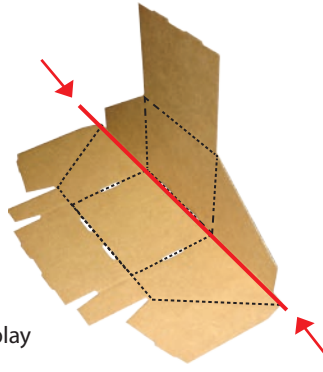
MODEL #8032

12" Four Tiered Counter Display



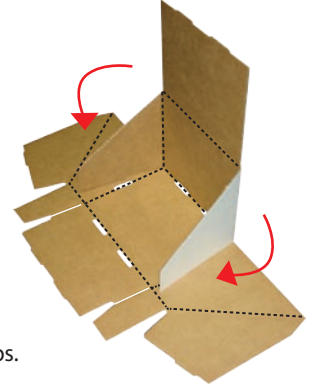
1

Fold the display in half.



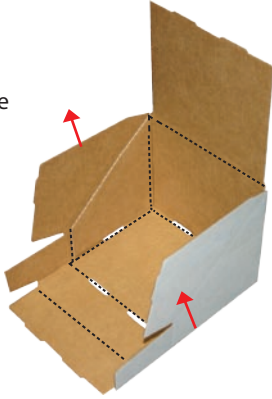
2

Fold in side flaps.



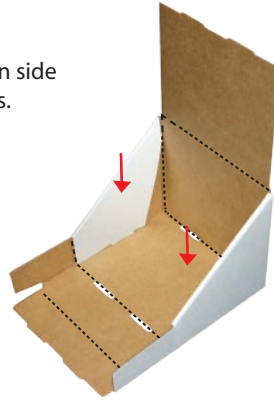
3

Fold up side panels.



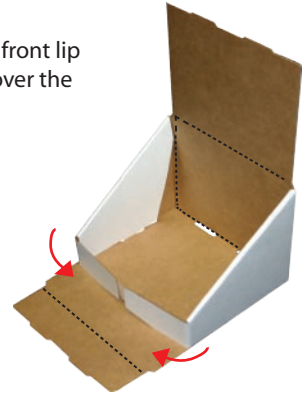
4

Lock in side panels.



5

Fold the front lip up and over the tabs.



6

Fold down the top panels.



7

Then lock into position.



8

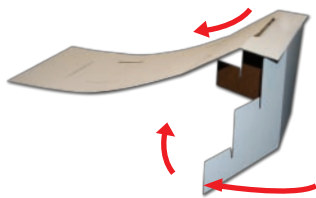


9

Tier Item:



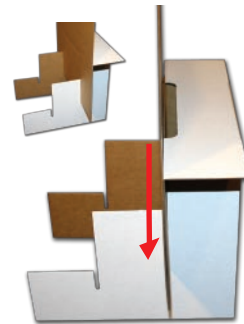
LAYOUT AS SHOWN



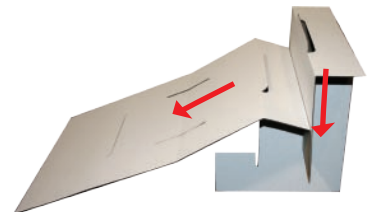
FOLD DOWN TOP & FOLD SIDES IN



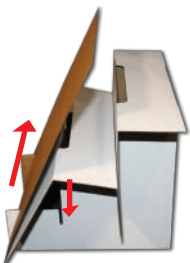
FOLD TOP AGAIN & SLIDE IN SLOT



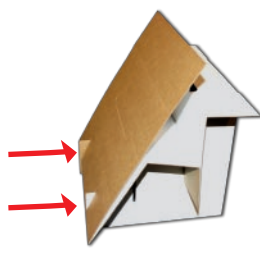
SLIDE FOLDED PART IN SLOT



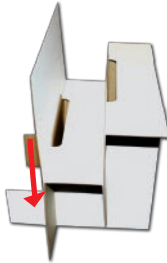
FOLD DOWN TOP



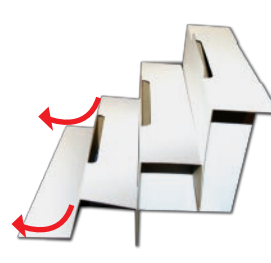
REPEAT STEP 3



SLIDE THROUGH THE SLOTS



PUSH IN ALL THE WAY



FOLD DOWN FLAP



PLACE IN TIER